



## ADSHEAD PARK, LOWER BASILDON

Hives were called in following the rejection of two previous planning applications for this hilltop site in the Chilterns, with a brief to start from a clean slate and take the project to completion. The design is entirely new-build and is a collage of motifs from early Lutyens, featuring oak roof trusses and bay windows. To achieve the finest quality finish within a conventional contract required meticulous attention to detail and this was recognised by an award for the brickwork detailing. The house is heated and cooled by ground source, and smart automation controls lighting, shading, security and entertainment. The house has a lift (in a tower) and a helical stair (under a plaster and glass dome) that give access to a basement fitness pool and a cinema suite for up to 12 guests.

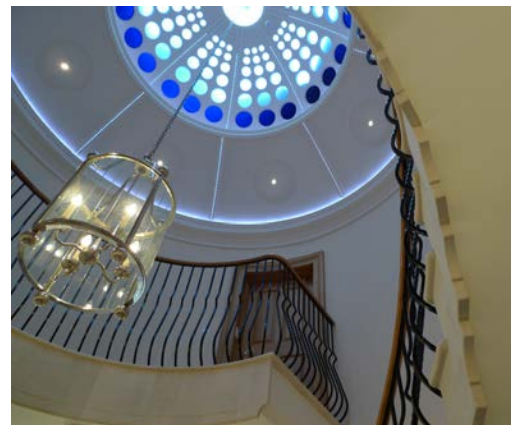
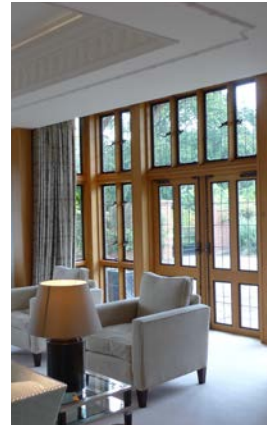
**CLIENT**  
Sir John Madejski OBE DL

**GROSS INTERNAL AREA**  
470m<sup>2</sup> above ground plus 190m<sup>2</sup> under-ground pool, wine cellar and cinema

**RIBA STAGES**  
Stages 1-7

**PLANNING DATE**  
March 2006

**COMPLETION DATE**  
October 2008



**hivesarchitects**

29 CASTLE STREET, READING, BERKS, RG1 7SB  
WWW.HIVESARCHITECTS.CO.UK  
0118 958 7331